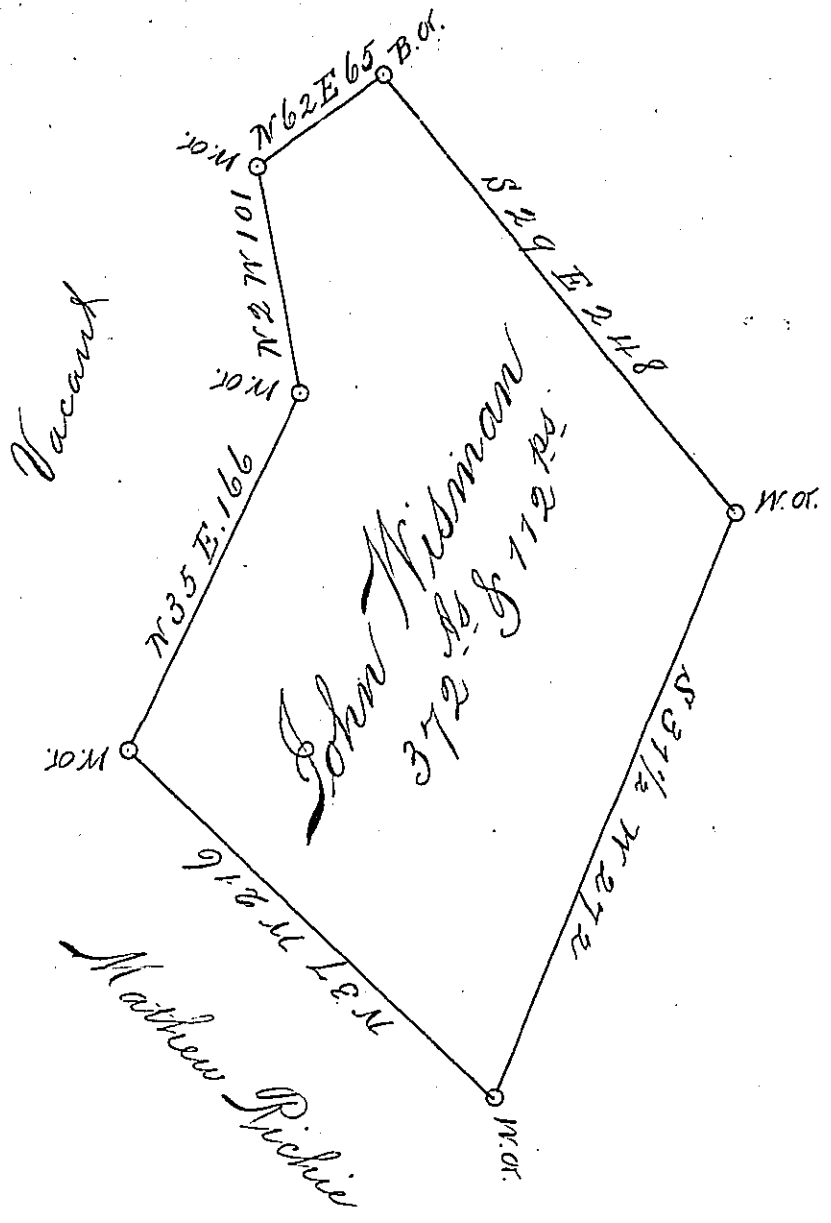


HANOVER —
BEAVER



A Draught a survey situate on the waters
of Kings Creek in Washington County containing
372 Acres and 112 perches strict measure. Executed
the 25th day of April 1793 by Vertue of a Certificate
for 400 Acres. Granted the 27th day of April 1780.
to John Wiseman by the Commissioners from
Virginia. And duly Entered with the County
Surveyor.

Thomas Stokely

Daniel Brodhead, Esquire }
Surveyor General of Pennsylvania }

D.S.

IN TESTIMONY that the above is a copy of the original remaining on file in the
Department of Internal Affairs of Pennsylvania, made con-
formably to an Act of Assembly approved the 16th day of
February, 1833, I have hereunto set my Hand and caused
the Seal of said Department to be affixed at Harrisburg, this
third day of September 1895

James W. Fatta
Secretary of Internal Affairs.